

Communication Power Corporation



VHF Power Module, 64W, CPC model#: AM-30-400-6.4E1-**Preliminary**

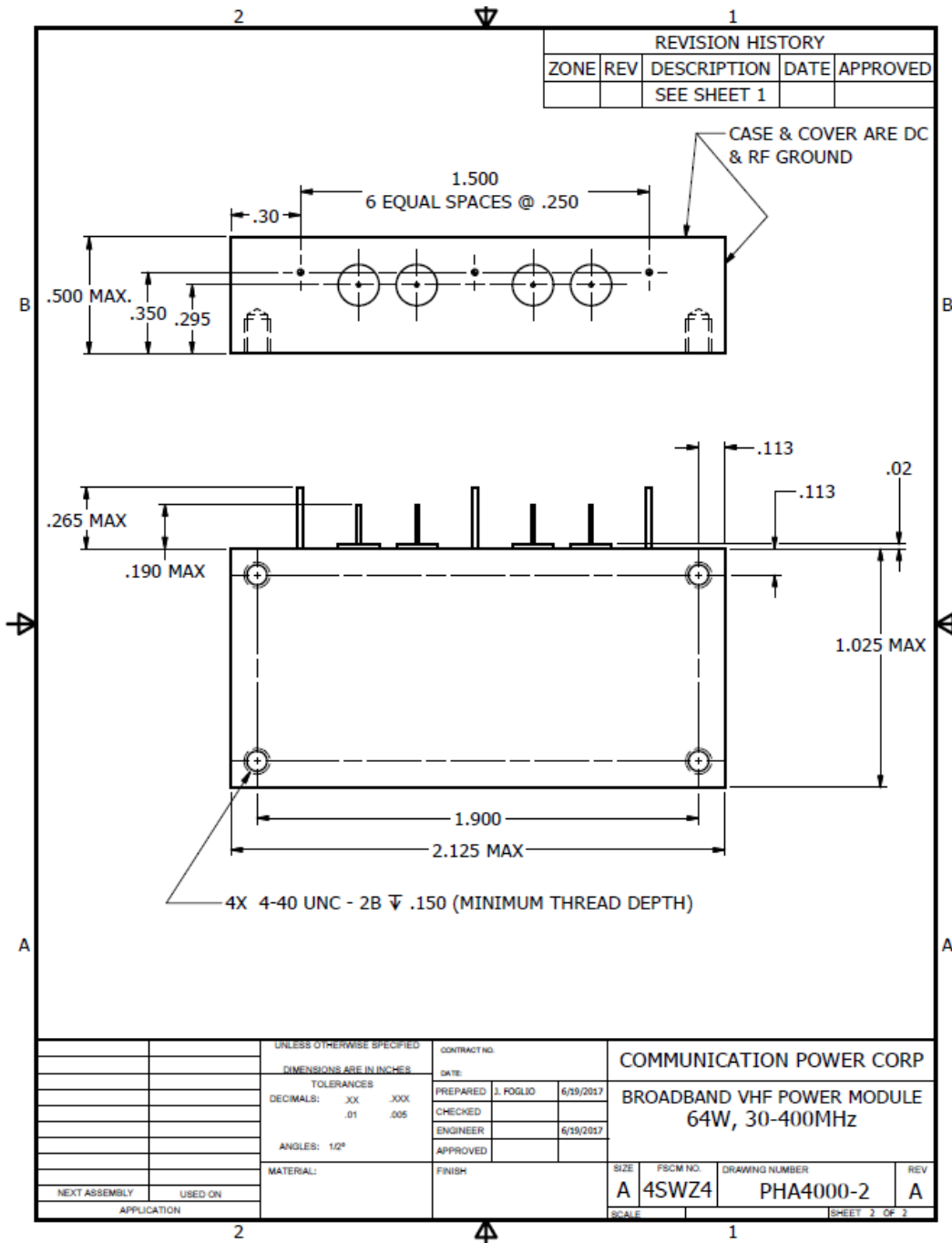
Electrical Specifications:

- Frequency range: 30-400Mhz
- Output Power: 64W CW minimum
- Power Gain: +7 dB minimum
- Module Efficiency: 20% minimum
- Input VSWR: 4:1 maximum
- Load VSWR tolerance: 2.5:1 maximum
- Gain flatness: +/- 1.5 dB maximum
- Harmonic content (2nd, 3rd): - 11 dBc maximum
- Spurious output: -80dBc maximum
- Supply Voltage: 27 VDC
- Bias Current: 150mA
- Temperature Range (case): -30 to + 100 degrees C
- Storage Temperature: -40 to + 125 degrees C

Pin Configuration:

Pin	Description
1	Ground
2	RF Input
3	+ 5.2 VDC
4	Ground
5	+27 VDC
6	RF Output
7	Ground

Communication Power Corporation (CPC)
80-3 Davids Drive
Hauppauge, New York 11788
(631)-434-7306
www.cpcamps.com



Mechanical Outline

Communication Power Corporation (CPC)
 80-3 Davids Drive
 Hauppauge, New York 11788
 (631)-434-7306
www.cpcamps.com