

Communication Power Corporation



VHF Power Module, 13W, CPC model#: AM-30-400-1.3E1-**Preliminary**

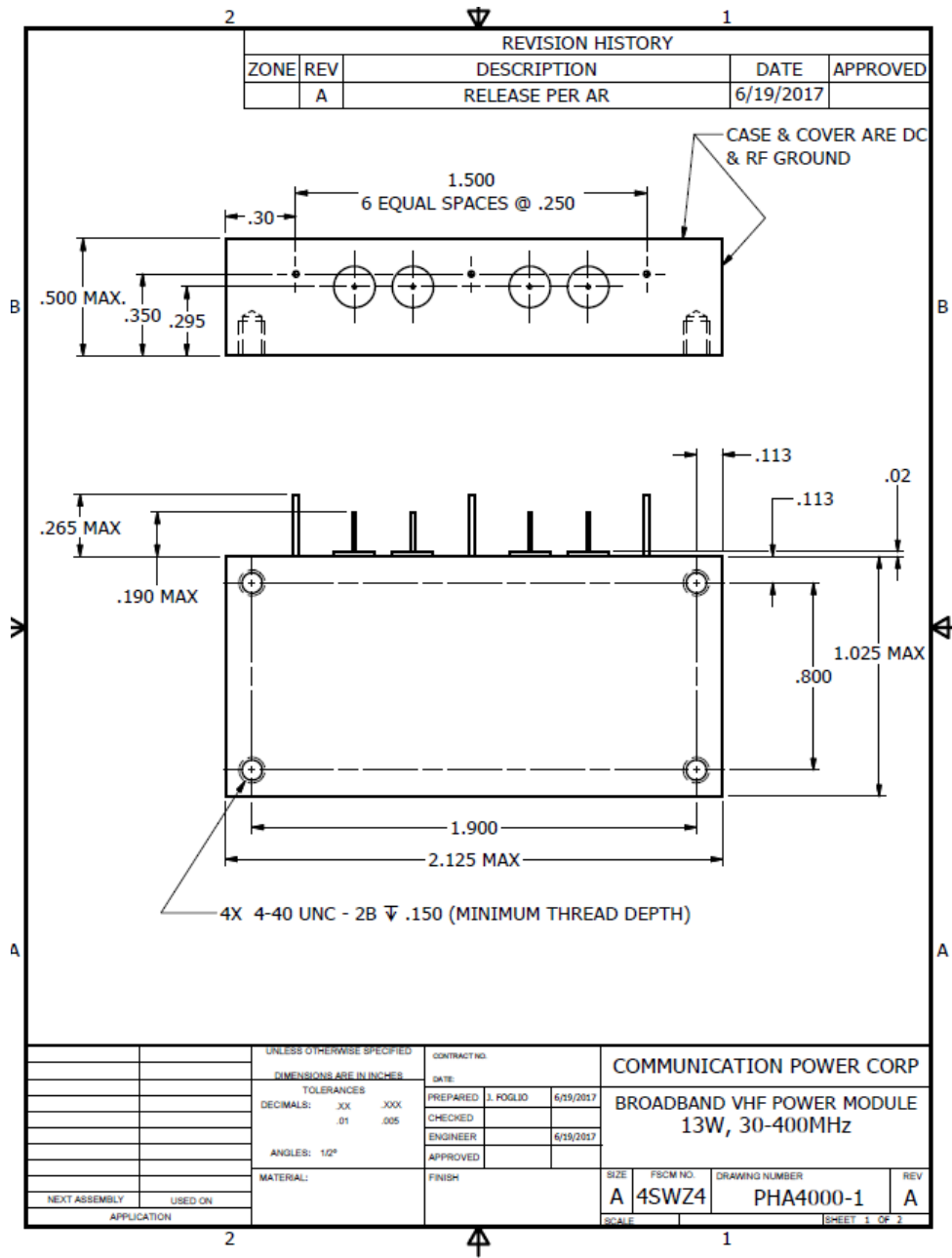
Electrical Specifications:

- Frequency range: 30-400Mhz
- Gain control: 60dB
- Output Power: 13W CW minimum
- Power Gain: +28 dB minimum
- Module Efficiency: 25% minimum
- Input VSWR: 3:1 maximum
- Load VSWR tolerance: 2.5:1 maximum
- Gain flatness: +/-3dB maximum
- Harmonic content (2nd, 3rd): -15dBc maximum
- Spurious output: -80dBc maximum
- Supply Voltage: 27 VDC
- ALC Voltage: -4 - +10 VDC
- Temperature Range (case): -30 to + 100 degrees C
- Storage Temperature: -40 to + 125 degrees C

Pin Configuration

Pin	Description
1	Ground
2	RF Input
3	Gain Control
4	Ground
5	+27 VDC
6	RF Output
7	Ground

Communication Power Corporation (CPC)
80-3 Davids Drive
Hauppauge, New York 11788
(631)-434-7306
www.cpcamps.com



Mechanical Outline

Communication Power Corporation (CPC)
 80-3 Davids Drive
 Hauppauge, New York 11788
 (631)-434-7306
www.cpcamps.com